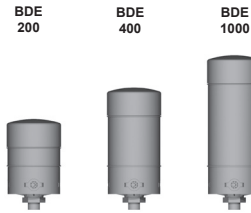


## Spare Parts List Breather Dryer BDE



### 1. MAINTENANCE

#### 1.1 GENERAL

Please follow the maintenance instructions!

#### 1.2 COMMISSIONING

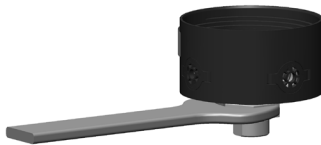
Check that the correct filter cartridge is fitted.

When the filter is due to be changed, the colour changes from dark red to light orange.

#### 1.3 TOOLS REQUIRED FOR MAINTENANCE

- Strap wrench (1 or 2 pieces)

| Connection                     | Ext. hex.   | Torque value |
|--------------------------------|-------------|--------------|
| 1" Slip Fit<br>Ø 33.4          | AF width 50 | -            |
| G 1"                           | AF width 50 | 20 Nm        |
| G 3/4"                         | AF width 50 | 20 Nm        |
| M42 x 2                        | AF width 50 | 20 Nm        |
| NPT 1"                         | AF width 50 | 20 Nm        |
| NPT 2"                         | AF width 65 | 20 Nm        |
| Flange adapter<br>DIN 24557/T2 | AF width 50 | -            |



### 2. CHANGING THE CARTRIDGE

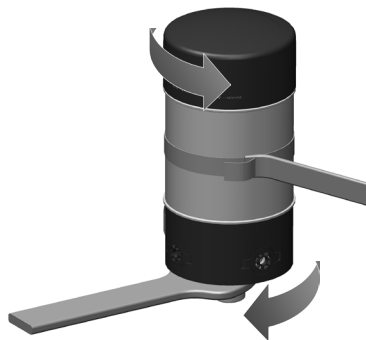
In order to ensure reliable function, the entire cartridge must be replaced.

#### 2.1 REMOVING THE CARTRIDGE

1. Apply open-jaw wrench to ext. hex. (alternatively: strap wrench on bottom section).



2. Unscrew filter cartridge from the bottom section of the BDE anticlockwise using a strap wrench.



3. Examine bottom section, especially sealing surfaces, for mechanical damage.

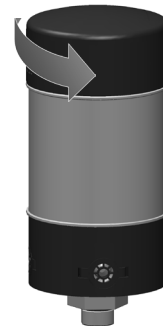
### 2.2 CARTRIDGE INSTALLATION

1. When fitting a new cartridge, check that the designation corresponds to that of the old cartridge.
2. Screw in the cartridge fully manually.



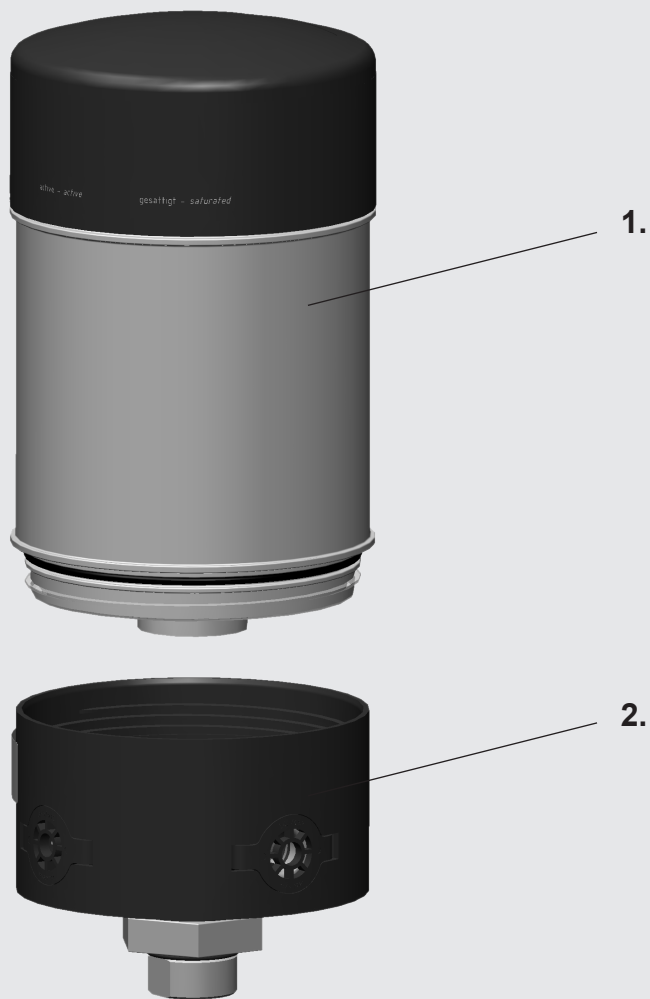
3. Then turn the cartridge back again slightly (max. 1/8 turn).

1/8



### 3. SPARE PARTS

#### 3.1 SPARE PARTS DRAWING BDE



#### 3.2 ERSATZTEILLISTE BDE

| Item      | Description   | BDE        |
|-----------|---|------------|
| <b>1.</b> | <b>Cartridge</b>                                    |            |
|           | BDE 200 X 2 W 0.0                                   | 01299653   |
|           | BDE 400 X 2 W 0.0                                   | 01299654   |
|           | BDE 1000 X 2 W 0.0                                  | 01299655   |
| <b>2.</b> | <b>Bottom section</b>                               |            |
|           | Bottom section E BDE G 1.0 (G 1")                   | 01301705   |
|           | Bottom section E BDE N 1.0 (NPT 1")                 | 01301703   |
|           | Bottom section E BDE N 2.0 (NPT 2")                 | 01301704   |
|           | Bottom section E BDE M 1.0 (M42x2)                  | 01305475   |
|           | Bottom section E BDE S 1.0 (Slip Fit 1")            | 01305476   |
|           | Bottom section E BDE F 1.0 (Flange)                 | 01305477 ← |
|           | Bottom section E BDE G 1.0 /-RV0.003) (G 1")        | 01301708   |
|           | Bottom section E BDE N 1.0 /-RV0.003) (NPT 1")      | 01301706   |
|           | Bottom section E BDE N 2.0 /-RV0.003) (NPT 2")      | 01301707   |
|           | Bottom section E BDE M 1.0 /-RV0.003) (M42x2)       | 01305478   |
|           | Bottom section E BDE S 1.0 /-RV0.003) (Slip Fit 1") | 01305479   |
|           | Bottom section E BDE F 1.0 /-RV0.003) (Flange)      | 01305480   |
|           | Bottom section E BDE G 1.0 /-RV0.02) (G 1")         | 01305481   |
|           | Bottom section E BDE N 1.0 /-RV0.02) (NPT 1")       | 01305482   |
|           | Bottom section E BDE N 2.0 /-RV0.02) (NPT 2")       | 01305483   |
|           | Bottom section E BDE M 1.0 /-RV0.02) (M42x2)        | 01305484   |
|           | Bottom section E BDE S 1.0 /-RV0.02) (Slip Fit 1")  | 01305485   |
|           | Bottom section E BDE F 1.0 /-RV0.02) (Flange)       | 01305486   |

Other spare parts on request

## 4. MAINTENANCE INSTRUCTIONS

### 4.1 USER INSTRUCTIONS FOR FILTERS



Notice

It is the responsibility of the owner to comply with the water regulations of the country concerned.



Caution

Statutory accident prevention regulations, safety regulations and safety data sheets for fluids must be observed.



Caution

When working on, or in the vicinity of, hydraulic systems, naked flames, spark generation and smoking are forbidden.



Caution

Hydraulic oils and water-polluting fluids must not be allowed to enter the soil or watercourses or sewer systems. Please ensure safe and environmentally friendly disposal of hydraulic oils. The relevant regulations in the country concerned with regard to ground water pollution, used oil and waste must be complied with.



Caution

The maximum storage duration of BDE filters/BDE cartridges is 2 years! The following conditions must be provided by the

customer:

- dry storage
- cool storage ( $\leq 40$  °C)
- protection from UV exposure



Not suitable for cleaning with high-pressure cleaner!

### Customer Information in respect of Machinery Directive 2006/42/EC

Hydraulic filters are fluid power parts/ components and are therefore excluded from the scope of the Machinery Directive. They do not bear the CE mark.

Before using these components, ensure compliance with the specifications provided by HYDAC Filtertechnik GmbH in this documentation.

The specifications also contain information on the relevant essential health and safety requirements (based on Machinery Directive 2006/42/EC) that are to be applied by the user.

We hereby declare that the filters are intended to be incorporated into machinery within the terms of the Machinery Directive 2006/42/EC.

It is prohibited to put the filters into service until the machinery as a whole is in conformity with the provisions of the Machinery Directive. Furthermore, our Terms of Sale and Delivery are available on our website ([www.hydac.com](http://www.hydac.com)).

### SERVICE ADDRESSES

**HYDAC Service GmbH**  
Postfach 1251  
66273 Sulzbach / Saar, Germany

#### Factory address:

Werk 13  
Friedrichsthaler Str. 15  
66540 Neunkirchen / Heinitz  
Germany

#### ServiCenter:

Tel.: +49 (0) 6897 / 509-9083  
Fax: +49 (0) 6897 / 509-9881

#### Customer service:

Tel: +49 (0) 6897 / 509-412  
Fax: +49 (0) 6897 / 509-828

## 4.2 MAINTENANCE, GENERAL

This section describes maintenance work which must be carried out periodically. The operational safety and life expectancy of the filter, and whether it is ready for use, depend to a large extent on regular and careful maintenance.

### 4.3 MAINTENANCE MEASURES

- Spare parts must fulfil the technical requirements specified by the manufacturer.
- This is always guaranteed for original HYDAC spare parts.
- Tools, working area and equipment are to be kept clean.
- After disassembling the filter, clean all parts, check for damage or wear and replace parts if necessary.
- When changing a filter element, a high level of cleanliness must be observed!

### 4.4 INTERVAL BETWEEN ELEMENT CHANGES

When the filter is due to be changed, the colour changes reliably from red to light orange.

### NOTE

The information in this brochure relates to the operating conditions and applications described. For applications and operating conditions not described, please contact the relevant technical department. Subject to technical modifications.